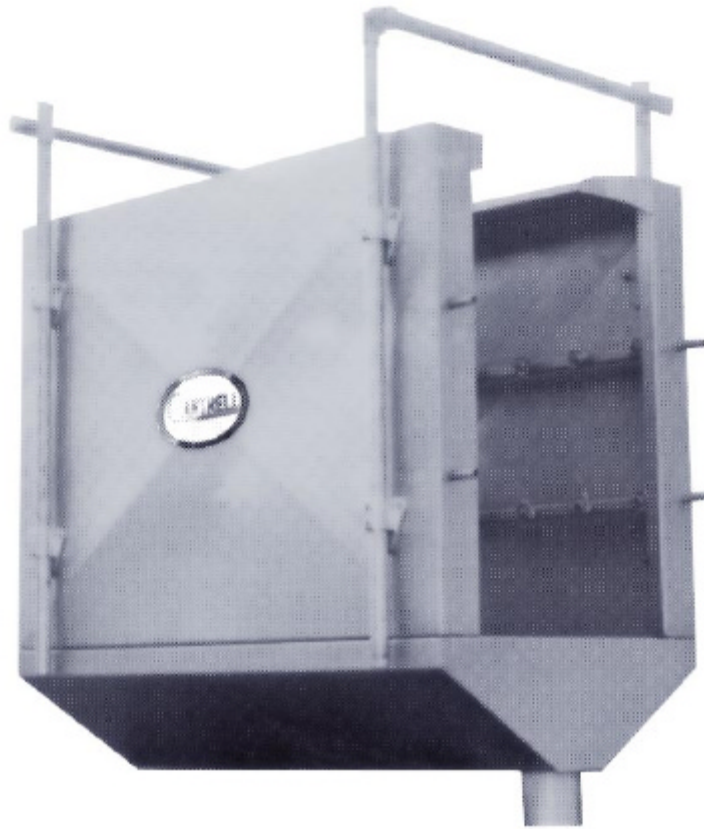


OUTSIDE BIRD WASHER

Model No. CW-1



The Cantrell Outside Bird Washer provides optimum cleaning through a series of fixed sprayers that insure complete coverage of the entire bird surface. Designed for picking or eviscerating lines, the Outside Bird Washer is available in 4', 6' or 8' lengths. The CW-1 is constructed of stainless steel with two (2) rows of sprayers on each side of the cabinet.

Cantrell Machine Co., Inc.

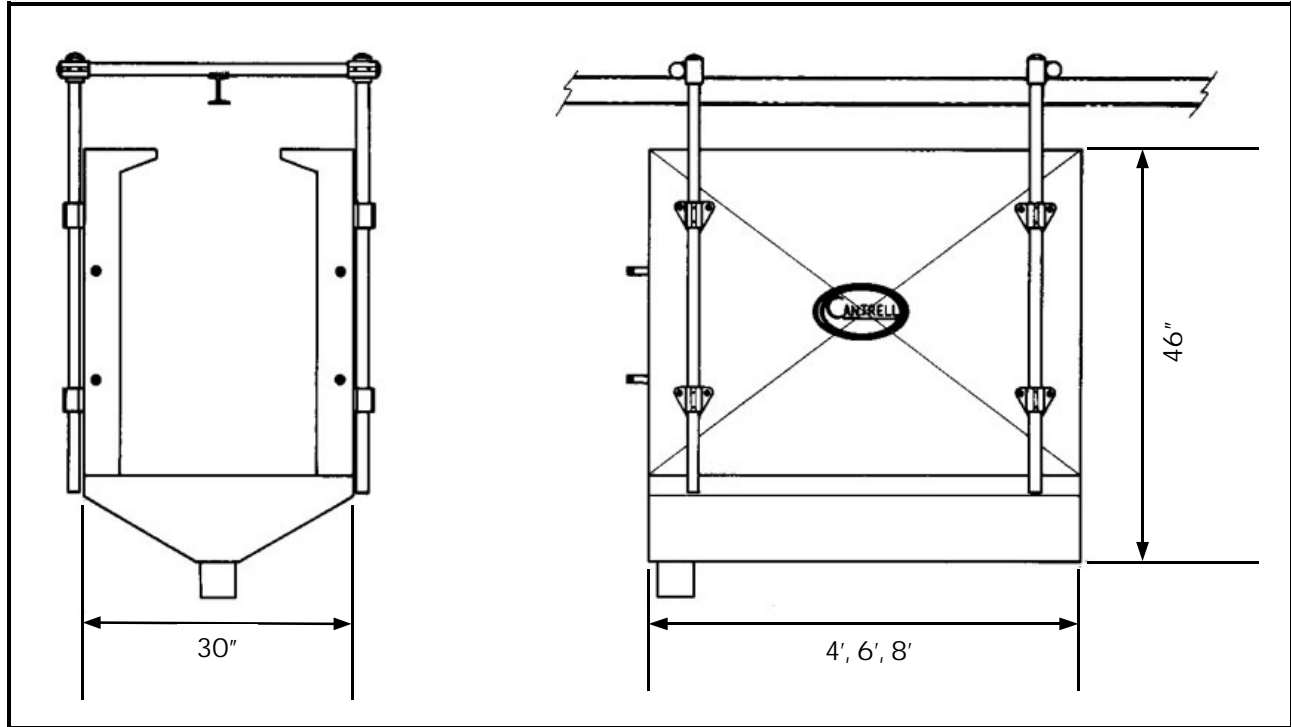
P O Box 757
1400 S. Bradford Street
Gainesville, Ga. 30503

Phone: 770-536-3611
Fax: 770-531-0832
www.cantrell.com



OUTSIDE BIRD WASHER

Model No. CW-1



TECHNICAL SPECIFICATIONS

Connection:	1/4" Water
Drain:	4 1/2" Dia.
Height:	46"
Width:	30"
Length:	48", 60", 96"
Net Weight:	110 Lbs.
Gross Weight:	185 Lbs.

The specifications as stated herein are the most current at the time of publication. However, consistent with our standard of continual product improvement, we reserve the right to change the design without notice or obligation to modify any equipment previously sold or delivered.

Cantrell Machine Co., Inc.

P O Box 757 1400 S. Bradford Street

Gainesville, Ga. 30503

770-536-3611

(Fax) 770-531-0832