

GIZZARD HARVESTER

Model No. CGH-9000

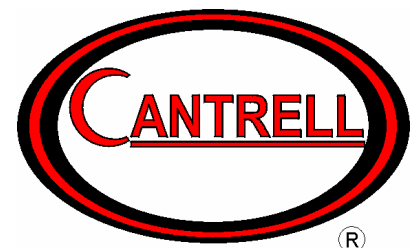


The Cantrell **CGH-9000 Gizzard Harvester** was designed with proficiency and ease in mind by providing quality processors with superior operation, low maintenance and optimum yield. The **CGH-9000 Gizzard Harvester** removes stomachs while splitting, peeling and cleaning up to 165 gizzards per minute and uses only 20-25 gallons of water per minute. The new see-through design assures sanitation and maintenance ease while safety features include both electronic and mechanical shear pins. A new over load protection innovation has been added to the transport rollers that Cantrell Machine would be glad to demonstrate to our potential customs. With these devices in place and the use of quality Cantrell Machine parts, down time could be a thing of the past.

Cantrell Machine Co., Inc.

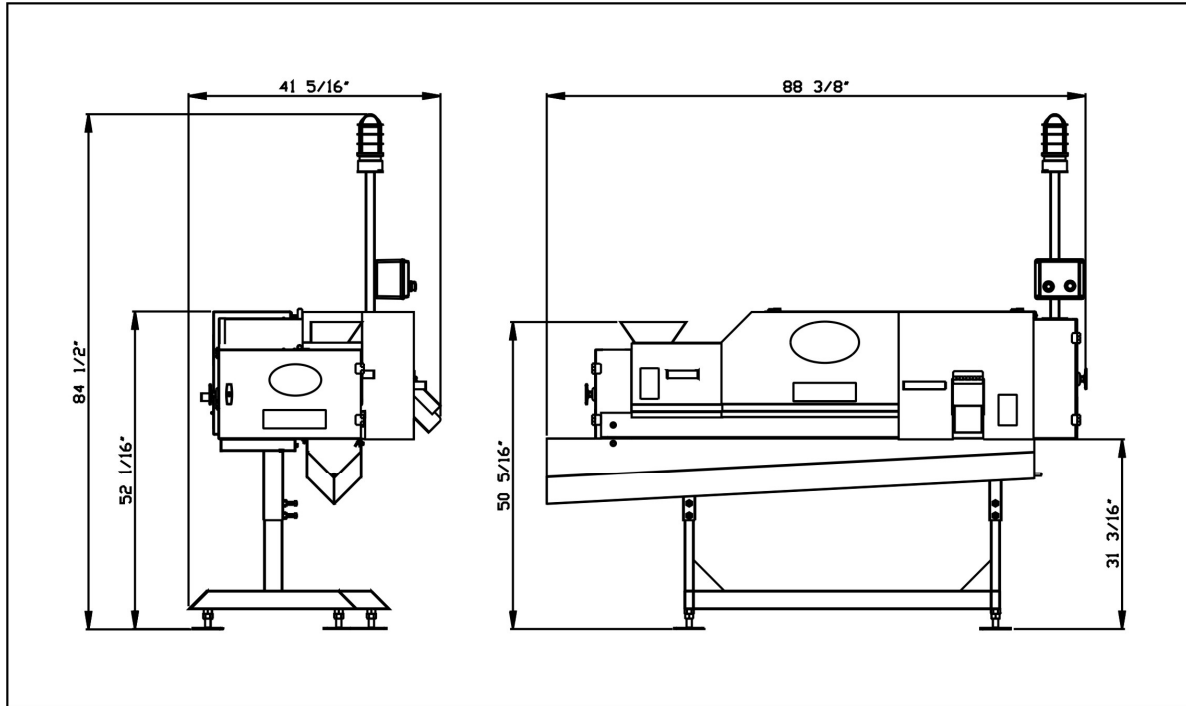
P O Box 757
1400 S. Bradford Street
Gainesville, Ga. 30503

Phone: 770-536-3611
Fax: 770-531-0832
www.cantrell.com



GIZZARD HARVESTER

Model No. CGH-9000



TECHNICAL SPECIFICATIONS

Position In Line:	After Heart & Liver Harvester
Construction:	Stainless Steel
Net Weight:	1100 lbs. Approx.
Gross Weight:	1450 lbs. Approx
Width:	41 5/16"
Length:	88 3/8"
Height:	52" top of cabinet 84 1/2" top of safety light.

The specifications as stated herein are the most current at the time of publication. However, consistent with our standard of continual product improvement, we reserve the right to change the design without notice or obligation to modify any equipment previously sold or delivered.

Cantrell Machine Co., Inc. www.cantrell.com

P O Box 757 · 1400 S. Bradford Street · Gainesville, Ga. 30503 · 770-536-3611 · (Fax) 770-531-0832