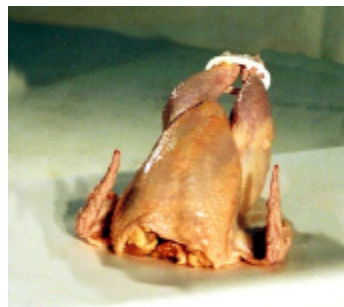


SEMI AUTOMATIC TRUSSER

Model No. CMT-01



The Cantrell Semi Automatic Trusser was specifically designed to assist processors in rotisserie and poly-bagged bird preparation. While speed will depend on the individual operator, the CMT-01 can operate at 60 birds per minute. There is no electricity required, simply a standard 50+ PSI air connection. The 300 piece "Jaw" indexer allows extended operation time without refill. Constructed of stainless steel and food grade nylon, the compact unit can be easily installed into an existing processing system.



Cantrell Machine Co., Inc.

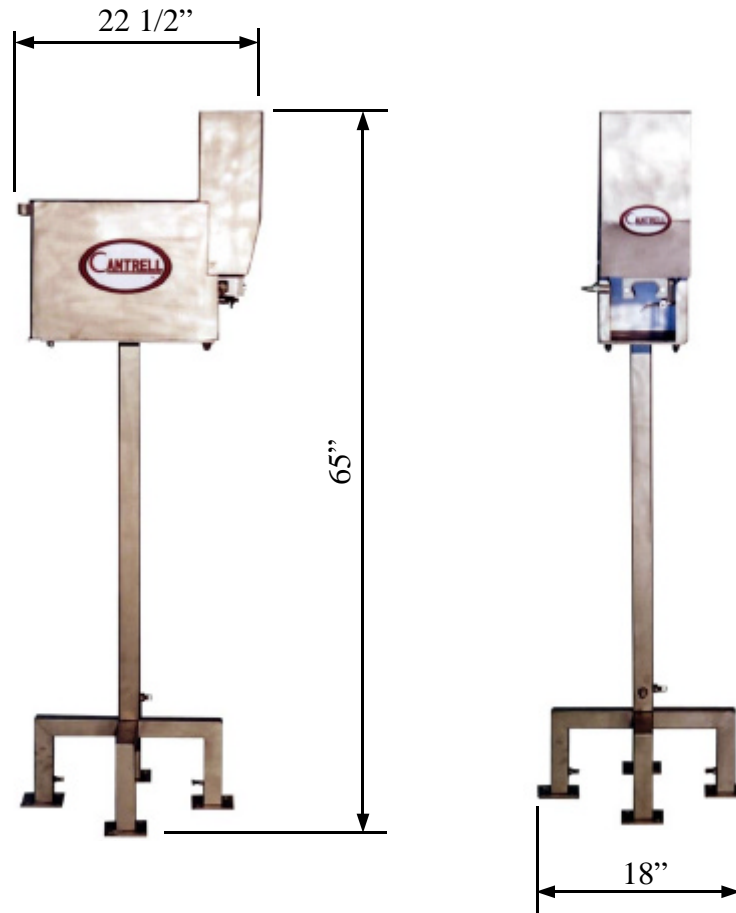
P O Box 757
1400 S. Bradford Street
Gainesville, Ga. 30503

Phone: 770-536-3611
Fax: 770-531-0832
www.cantrell.com



SEMI AUTOMATIC TRUSSER

Model No. CMT-01



Position In Line:	After chilling and before marinating
Construction:	Stainless Steel & Food Grade Nylon
Air Connection:	1/4" @ 50 PSI
Width:	18" (Base)
Length:	22 1/2"
Height:	Per customer specs (65" shown)

The specifications as stated herein are the most current at the time of publication. However, consistent with our standard of continual product improvement, we reserve the right to change the design without notice or obligation to modify any equipment previously sold or delivered.