

▶ Viscera Cutter Model No. P-2000

▶ The Cantrell Automatic Viscera Cutter provides a consistently accurate cut by means of a circular stainless steel blade.

The P-2000 is mounted above the overhead conveyor and is driven by a 1 HP motor. It is usually located after heart and liver harvesting and before viscera harvesting.

Its compact design requires little space and its minimal moving parts mean easy maintenance and clean-up. Sharpening of the circular blade and bearing lubrication is all the service necessary.

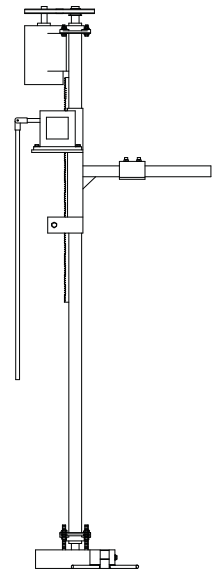
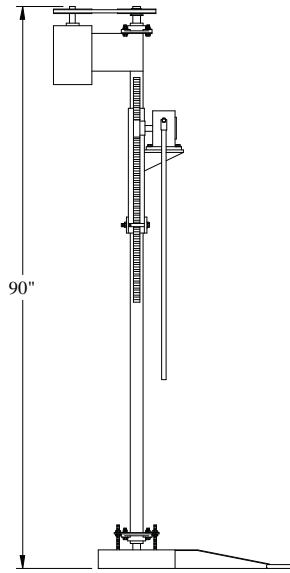
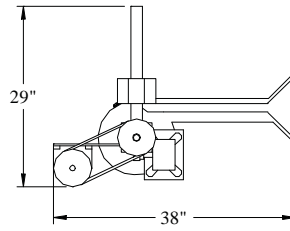
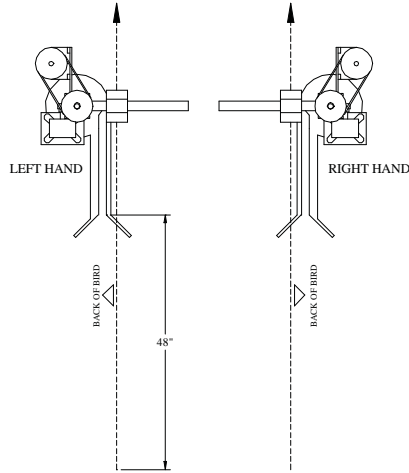
Constructed almost entirely of high grade stainless steel.



CANTRELL

Parts | Equipment | Systems | Solutions

Viscera Cutter Model No. P-2000



TECHNICAL SPECIFICATIONS

Position In Line:	After heart & liver harvesting
Capacity:	6000 Birds Per Hour
Installed Power:	1 HP motor / .75 kw
Net Weight:	130 lbs. / 59 kg
Gross Weight:	272 lbs. / 123 kg
Width:	29 in. / 737 mm
Height:	90 in. / 2286 mm

The specifications as stated herein are the most current at the time of publication. However, consistent with our standard of continual product improvement, we reserve the right to change the design without notice or obligation to modify any equipment previously sold or delivered.