

VISCERA HARVESTER

Model No. CVH-14



The process of viscera removal can create many problems for processing managers and supervisors. The Cantrell CVH-14 provides the perfect solution to those problems with high yields, no broken hocks, backbones or ribs, and low cost maintenance.

The CVH-14 is driven directly by the overhead conveyor requiring no electricity. Water is required to rinse each probe after the viscera package has been released and a minimal amount of air pressure is needed to keep the jaws of each probe closed during the cycle. The CVH-14 is installed after the heart and liver harvesting operation and removes the viscera package from the bird. The package, which includes

the gizzard, is released into the gizzard harvester. This uniform process of removal and release will help your gizzard harvester perform at its maximum capability. Furthermore, the CVH-14 complies with all USDA regulations.

Cantrell Machine Co., Inc.

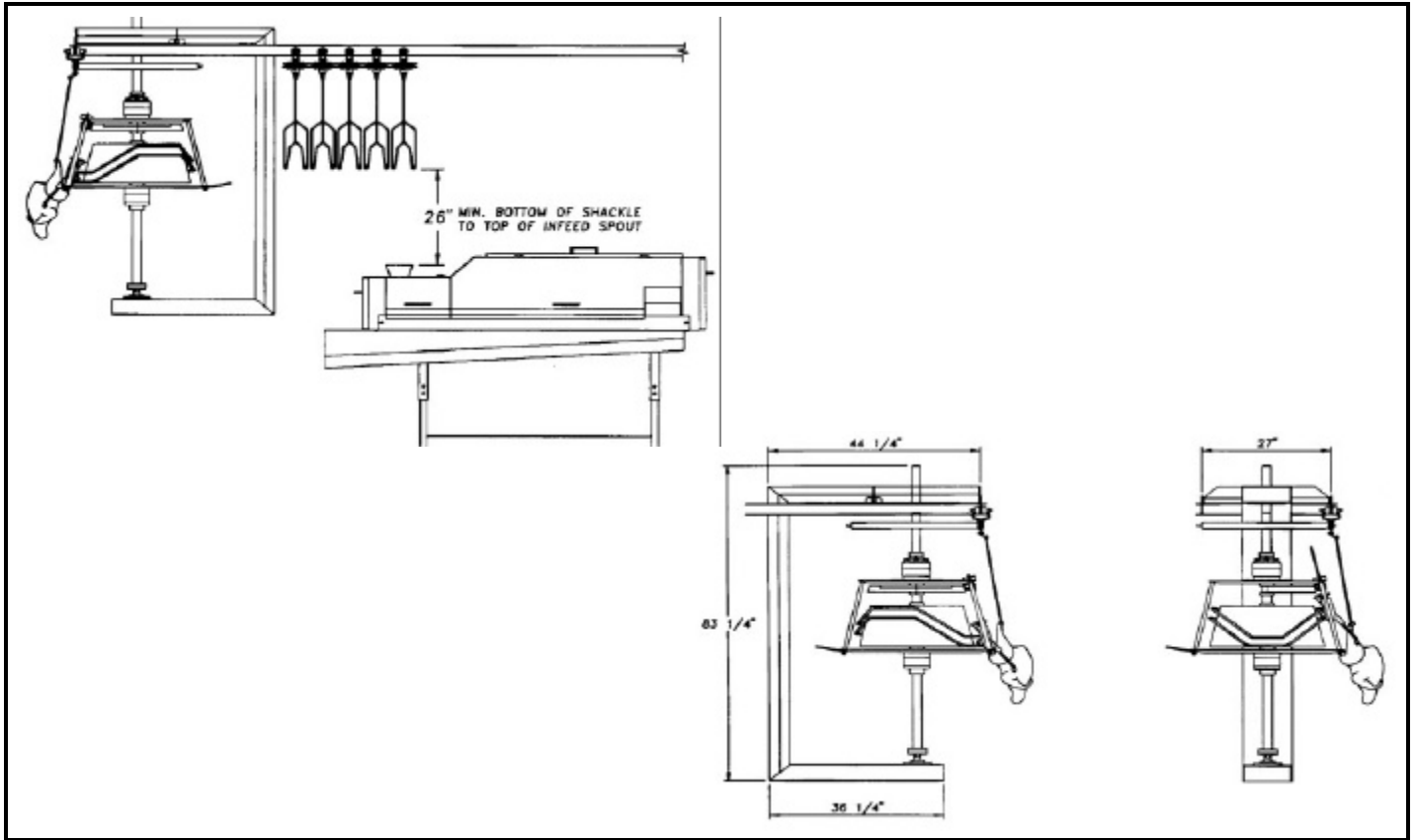
P O Box 757
1400 S. Bradford Street
Gainesville, Ga. 30503

Phone: 770-536-3611
Fax: 770-531-0832
www.cantrell.com



VISCERA HARVESTER

Model No. CVH-14



TECHNICAL SPECIFICATIONS

Air:	3/8" Connection / 3 CFM @ 50 PSI
Water:	1/2" Connection / 2.5 GPM
Capacity:	6000 Birds Per Hour
Position In Line:	After Heart & Liver Harvesting Operation
Rotation:	Determined Facing Back of Bird
Viscera Presentation:	Determined Facing Back of Bird
Height:	83 1/4"
Width:	27"
Length:	44 1/4"

The specifications as stated herein are the most current at the time of publication. However, consistent with our standard of continual product improvement, we reserve the right to change the design without notice or obligation to modify any equipment previously sold or delivered.

Cantrell Machine Co., Inc.

P O Box 757 1400 S. Bradford Street

Gainesville, Ga. 30503

770-536-3611

770-531-0832